


# Project Flow Diagrams, Pull Planning and the 'Deepwater Titan'

Wayne Greenwood - Director and Co-Founder  
OverVue Planning Systems Inc.





“20 years ago, we planned projects on walls.  
Today we plan them in small electronic boxes...  
and we can't see them anymore!”

J. Rieksts-Alderman - KPMG







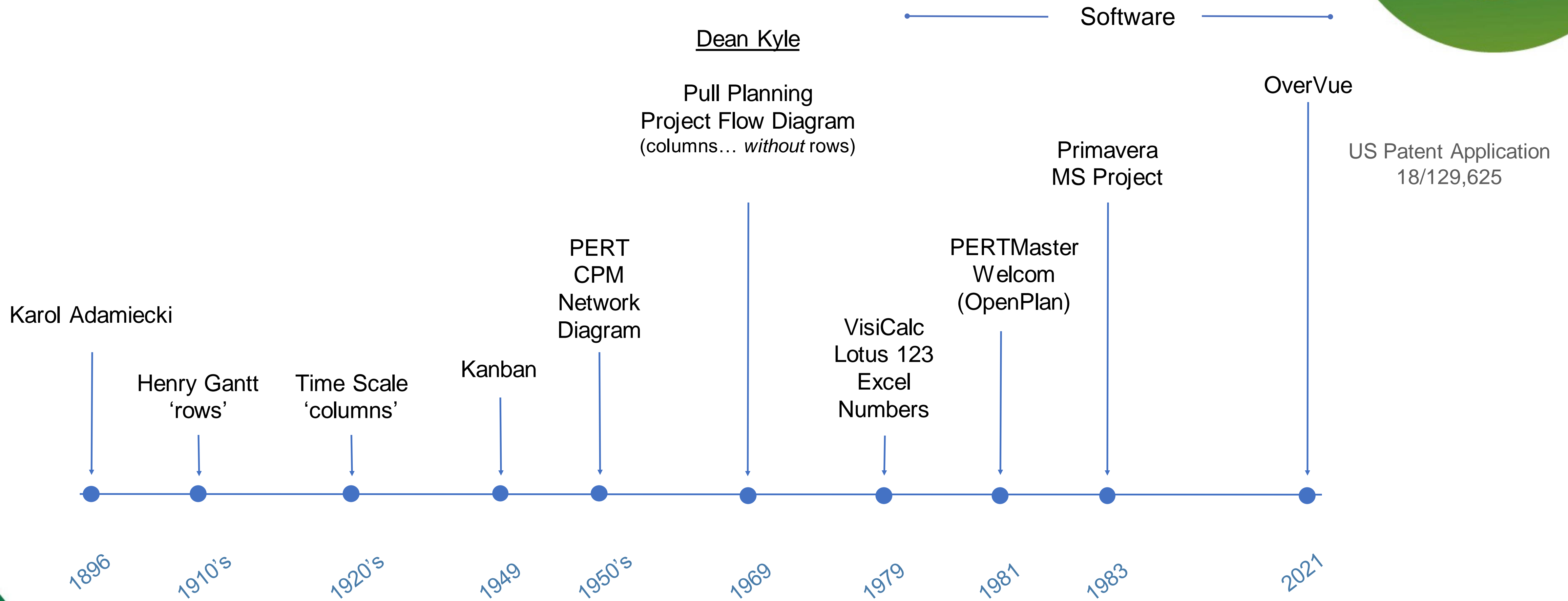
The greatest challenge to project planning...

Project plans are made up of deliverables and tasks consisting of lots of data that must be coordinated into an accurate and visual work flow that we all can see.

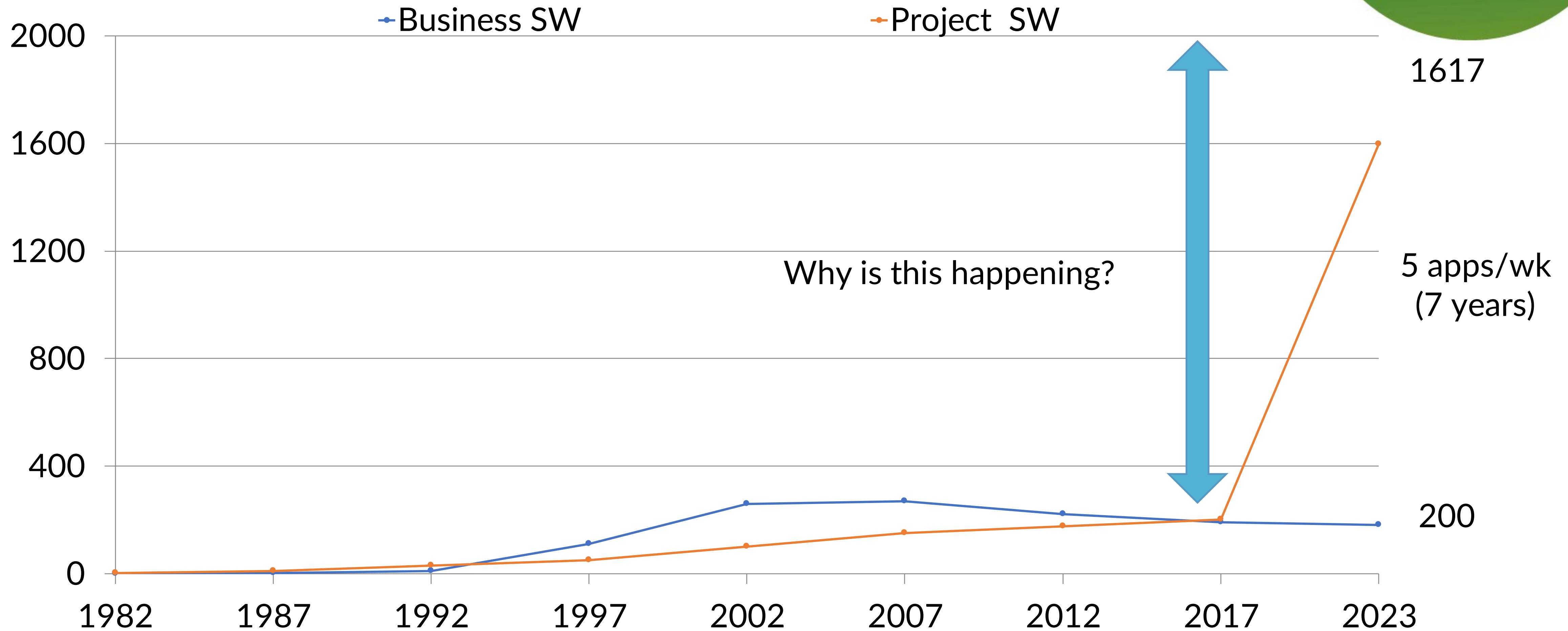
Welcome to the quest for the project 'Rosetta Stone'



# Rows and Columns et al



# Software growth curve...

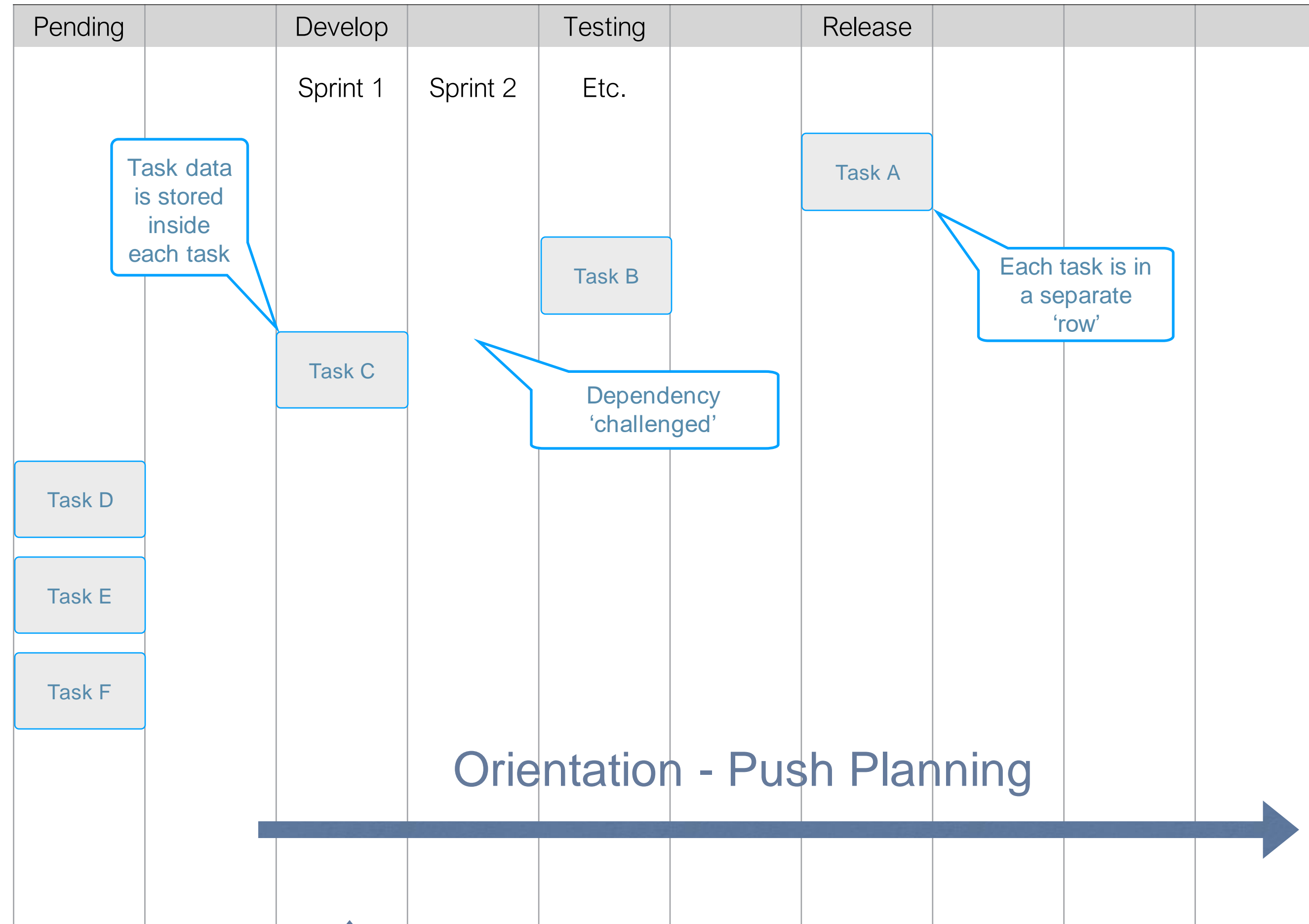




# Kanban/Agile swim lanes (task on node)

Time-scaled

Rows →



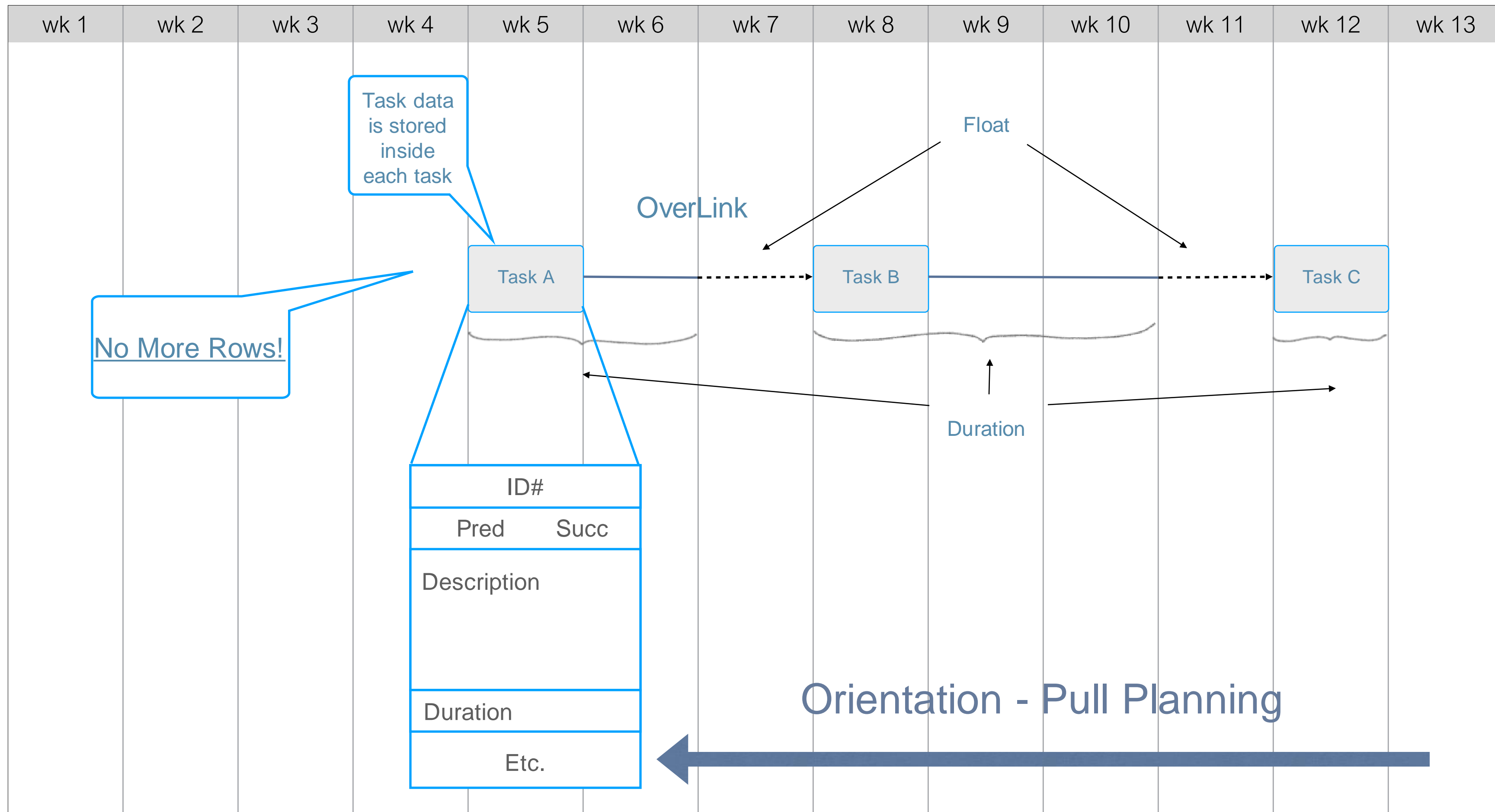
↑  
Columns





# Project flow diagram (task on node)

Time-scaled



No More Rows!

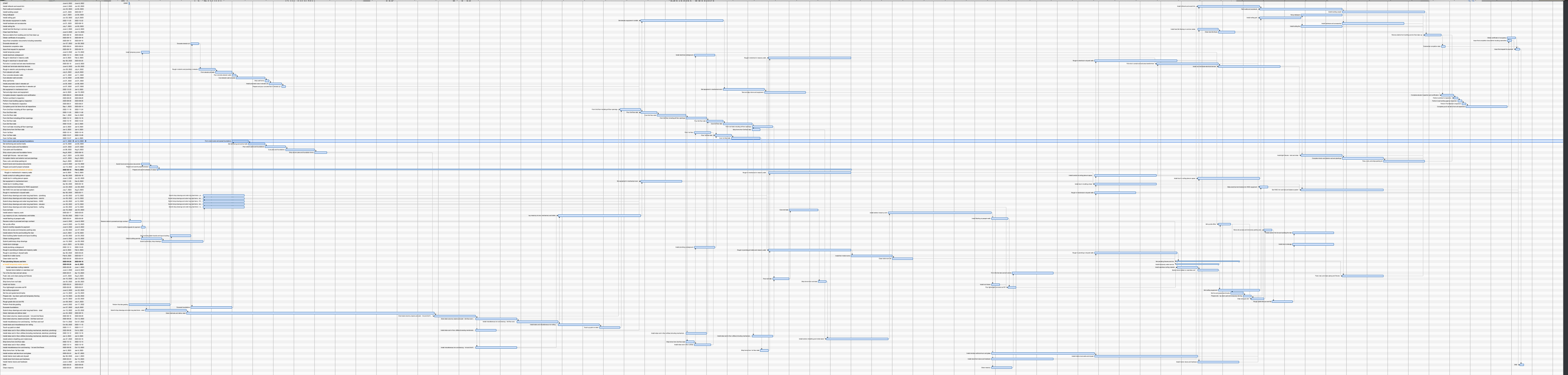
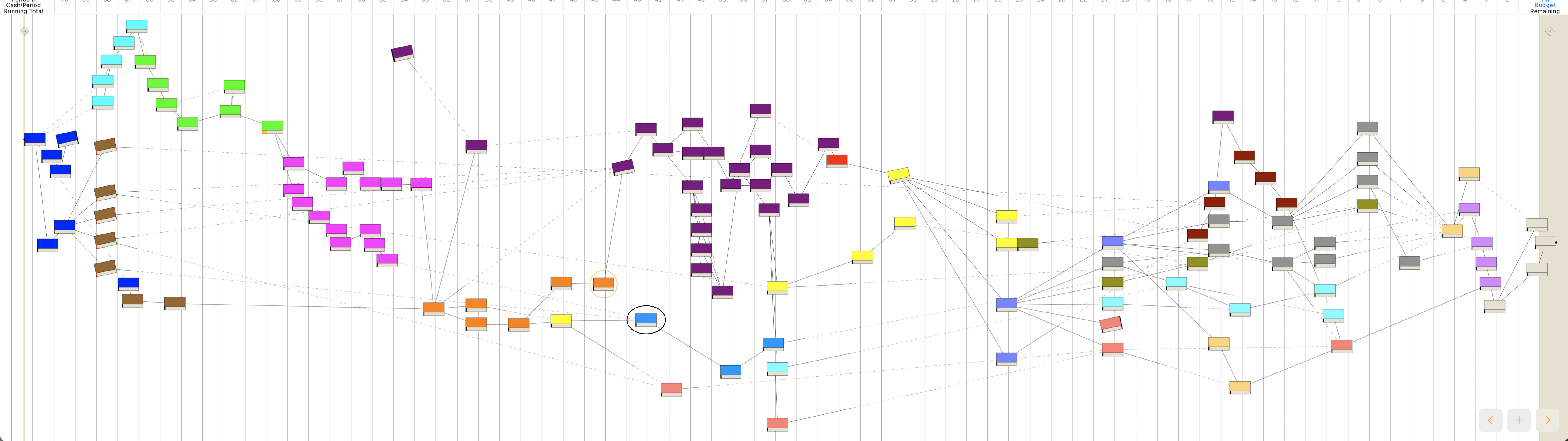
Task data is stored inside each task

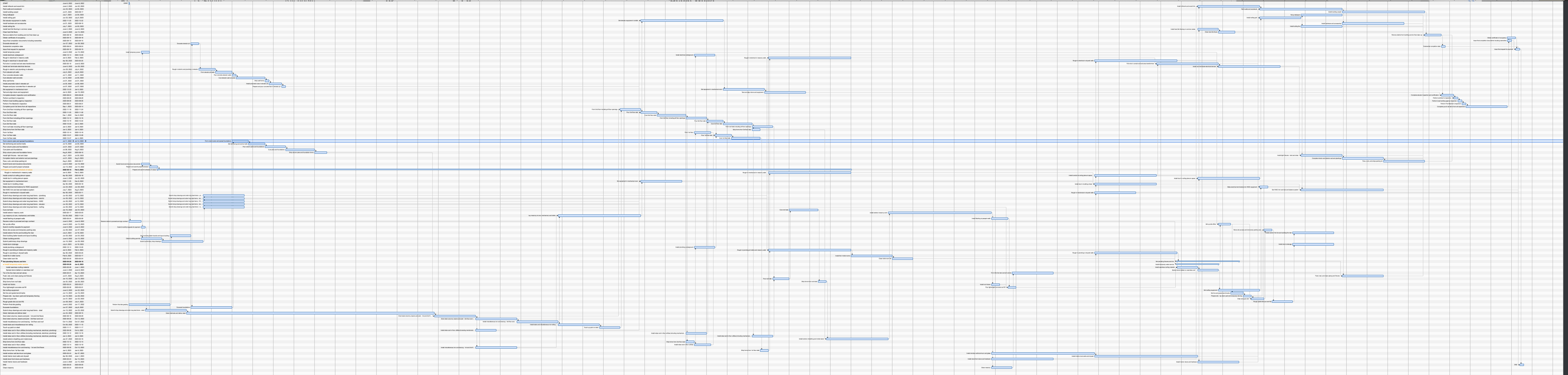
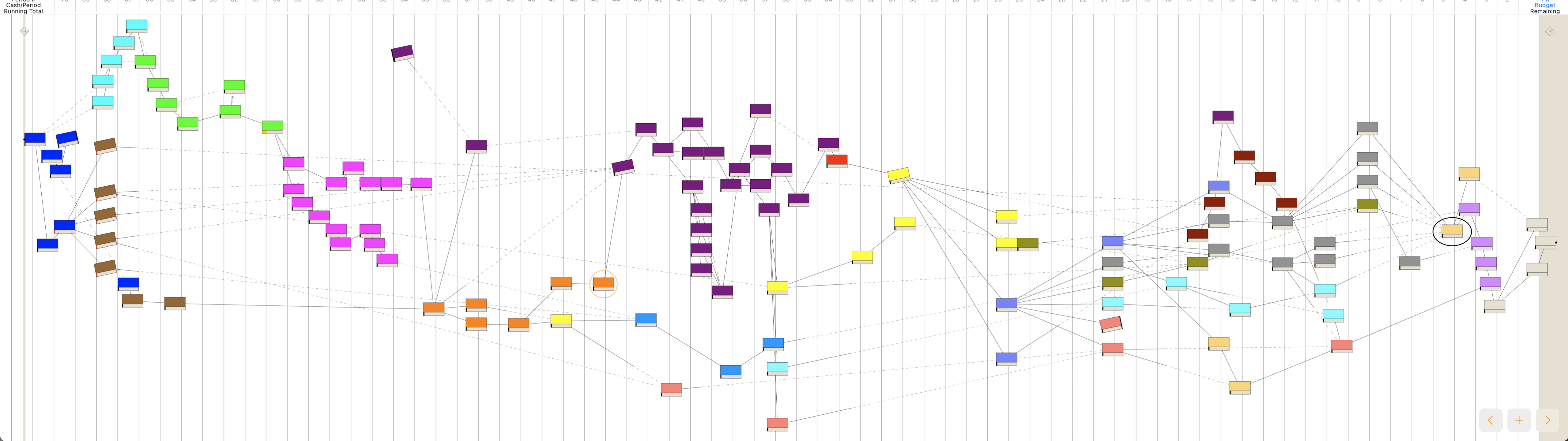
Columns

Orientation - Pull Planning

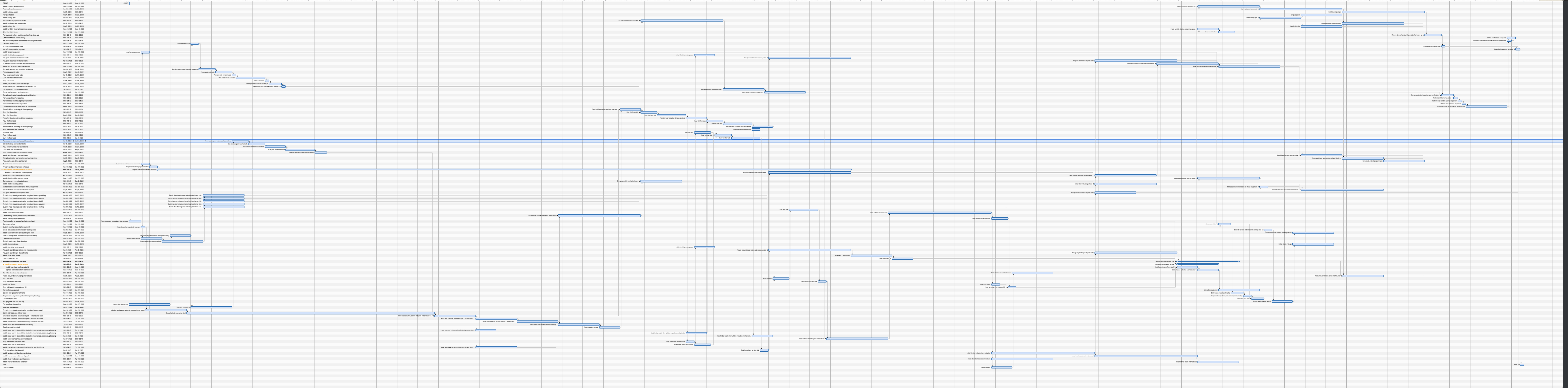
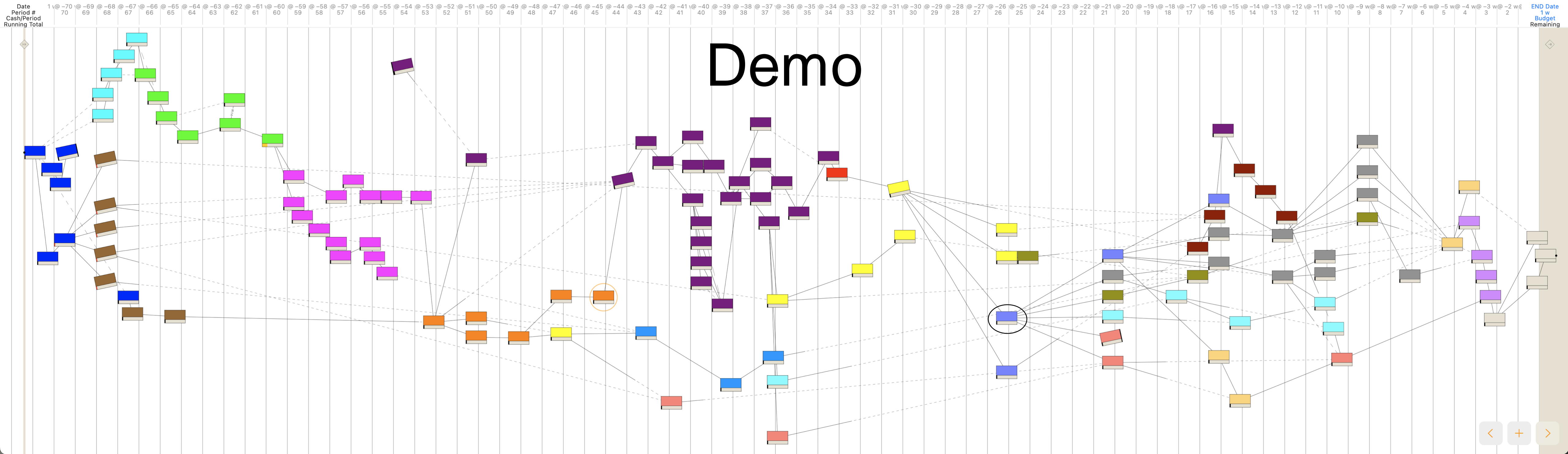














# Transocean's 'Deepwater Titan'





# Q & A





**THANK YOU**

