

One team, two journeys:

How performance measurement metrics drives
engineering design behaviour

Acknowledgement of Wurundjeri Woi-wurrung Country

In the spirit of reconciliation, Prescience 3PO supports the Uluru Statement from the Heart.

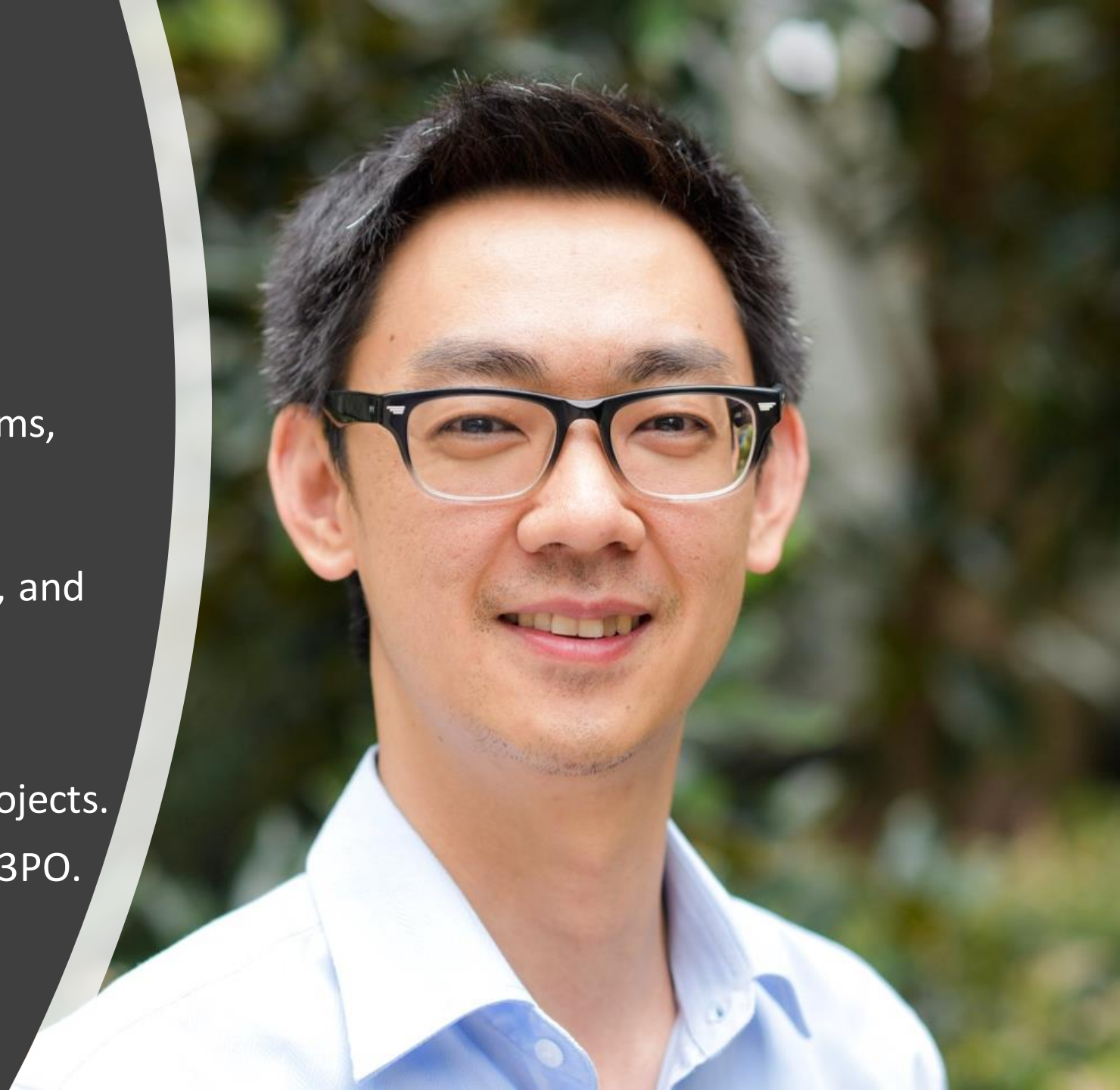
We acknowledge the Wurundjeri Woi-wurrung people as the Traditional Custodians of the Country that this event is taking place. We acknowledge their connections to land, sea and community. We would like pay our utmost respect to their Elders past, present and emerging and extend that respect to all Aboriginal and Torres Strait Islander peoples today.

Prologue



About me

- 16 years leading projects & programs, realising organisational strategies.
- Worked with multinationals, Tier 1 contractors, private equity owners, and start-ups.
- Delivered complex + complicated engineering & construction, ERP technology, and transformation projects.
- Co-founder and MD of Prescience 3PO.

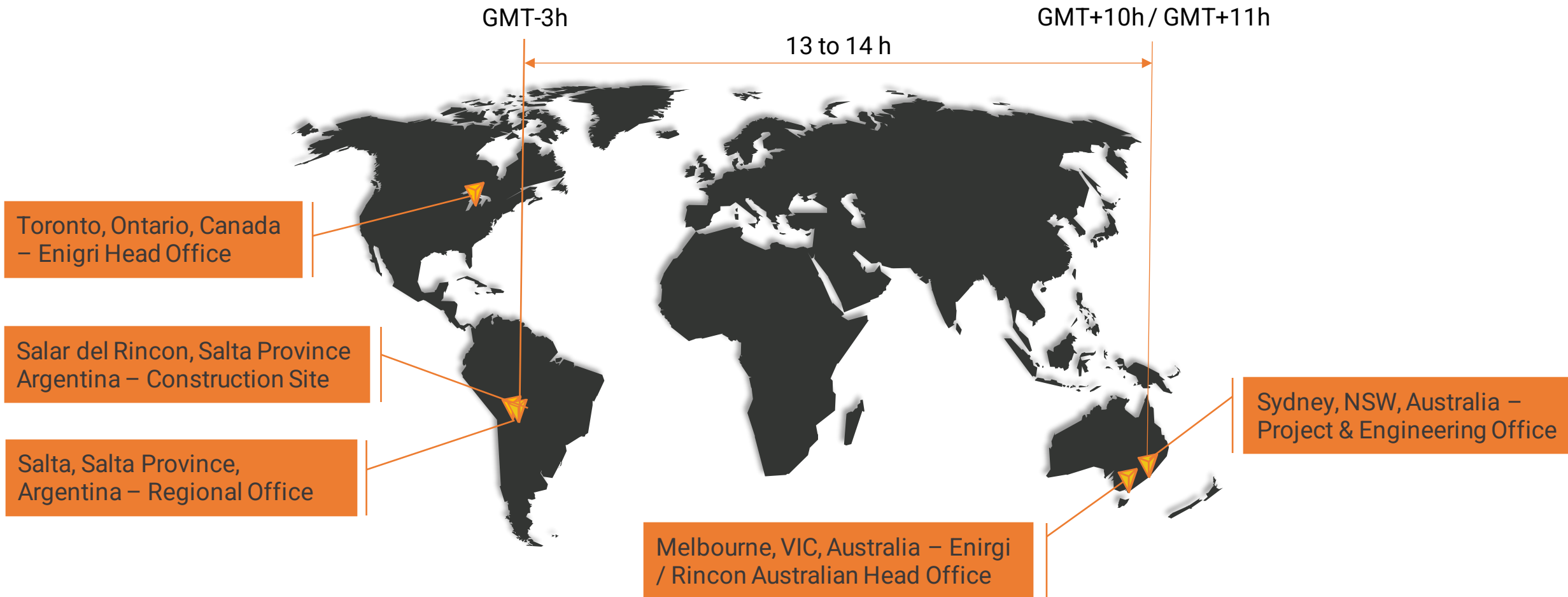


Chapter 1 – The Project





Significant Project Locations



Chapter 2 – This is the way



Demonstration Plant Engineering

- Design Period – 6 months
- Performance Measurements
 - 0% = not started
 - ◐ 25% = Started
 - 100% = Approved
- Stakeholder education required.
- Engineers and designers required convincing.



Definitive Feasibility Study (DFS)

- DFS in accordance with NI 43-101
- Study Estimate:
 - Estimate: Class III
 - Accuracy: -10 % and +15 %
- Performance Measurements
 - 0% = not started
 - ◐ 25% = Started
 - ◑ 75% = Issues for approval
 - 100% = Approved



Chapter 3 – The End...

(does it justify the means?)

It all depends on ...

- Why do we set performance Measures?
- Who is it for?
- What outcomes do are we trying to achieve?

Q&A

Thank you and acknowledgements

✉ Mark.Young@P3PO.com.au

🌐 <https://www.linkedin.com/in/markyoungau/>

Epilogue

