

Pull Planning using Project Flow Diagrams

Tools and Processes (100⁺ years)

Alan Uren - CEO and Founder


Wayne Greenwood – Director and Co-founder



OverVue Planning Systems



Project Controls
EXPO
London, UK



“20 years ago, we planned projects on walls.
Today we plan them in small electronic boxes...
and *we can't see them anymore!*”

J. Rieksts-Alderman - KPMG



OverVue Planning Systems



Project Controls
EXPO
London, UK



The greatest challenge to project planning...

Project plans are made up of deliverables and tasks consisting of lots of data that must be coordinated into an accurate and visual work flow that we all can see.

Welcome to the quest for the project 'Rosetta Stone'

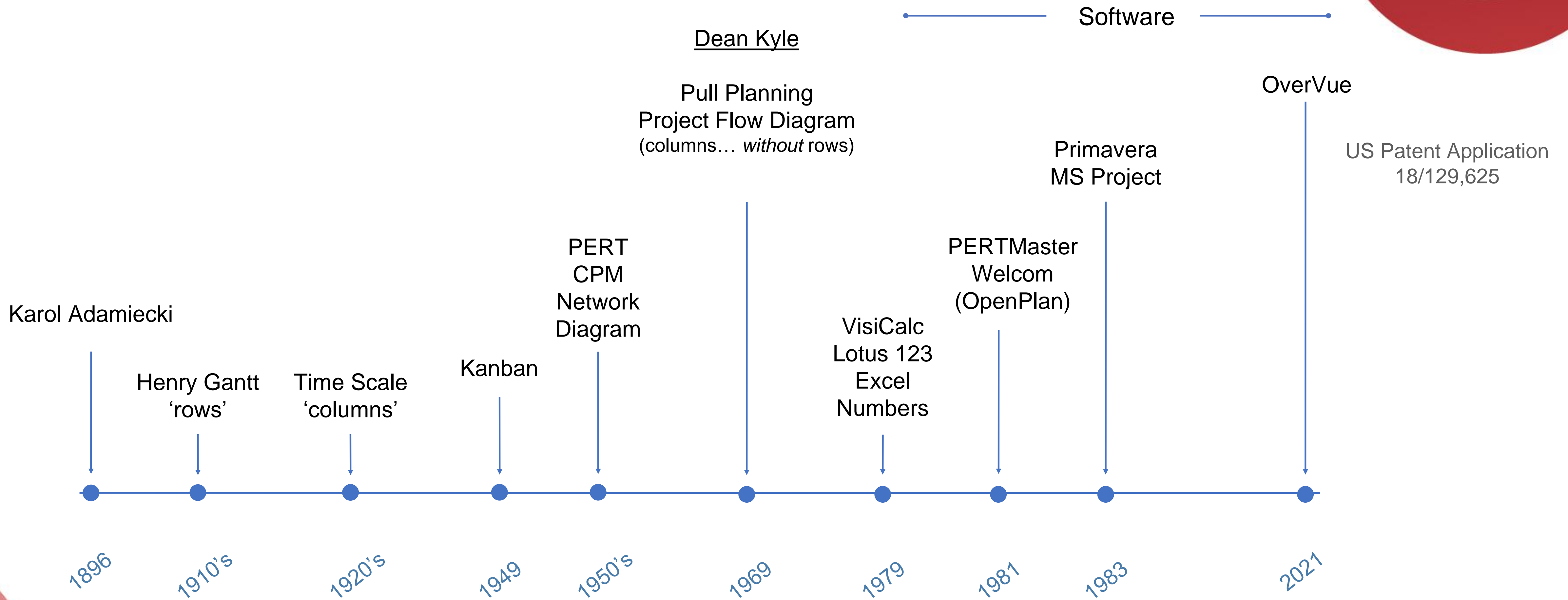


OverVue Planning Systems



Project Controls
EXPO
London, UK

Rows and Columns et al

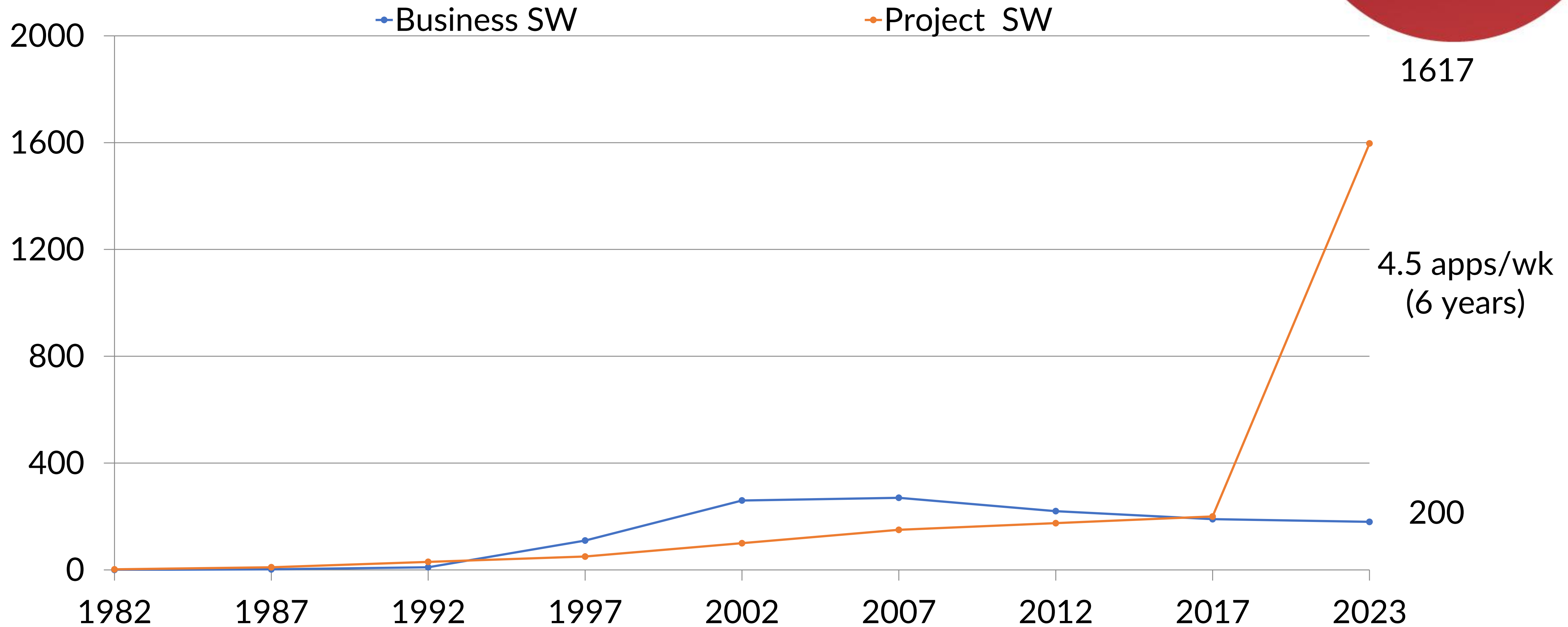


OverVue Planning Systems



Project Controls
EXPO
London, UK

Software growth curve...



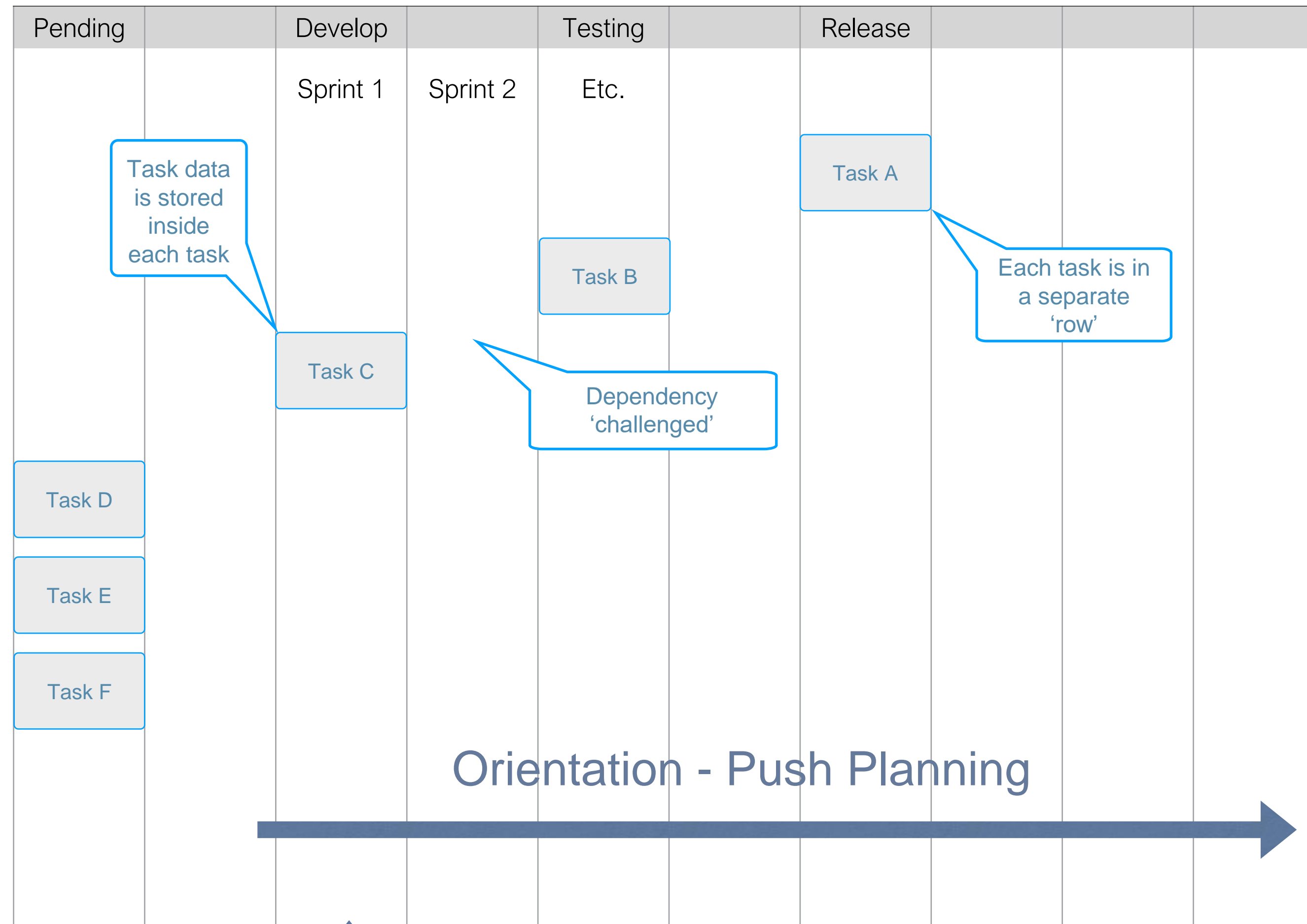
OverVue Planning Systems



Project Controls
EXPO
London, UK

Kanban/Agile swim lanes (task on node)

Rows →



↑
Columns

Orientation - Push Planning

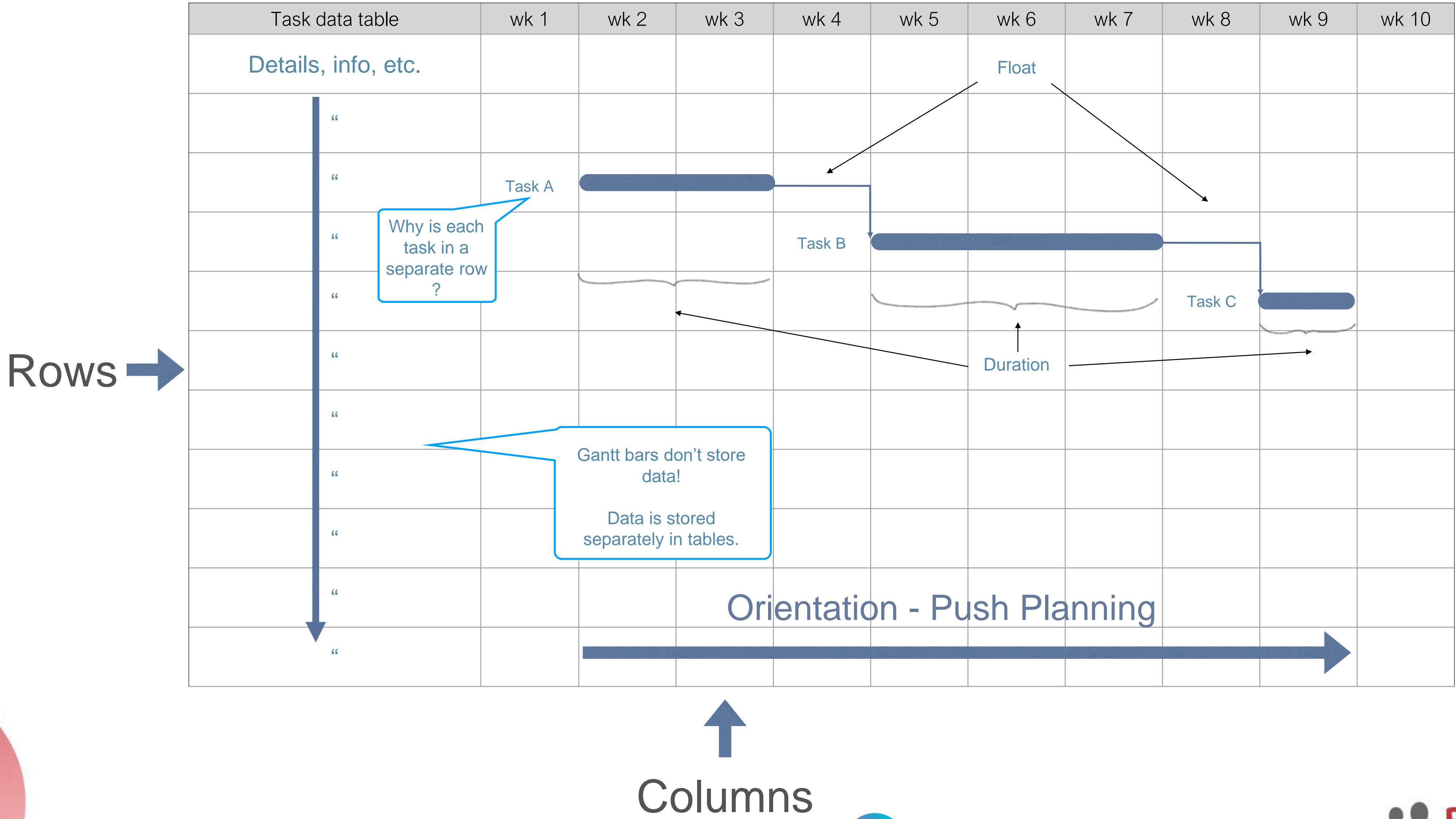


OverVue Planning Systems



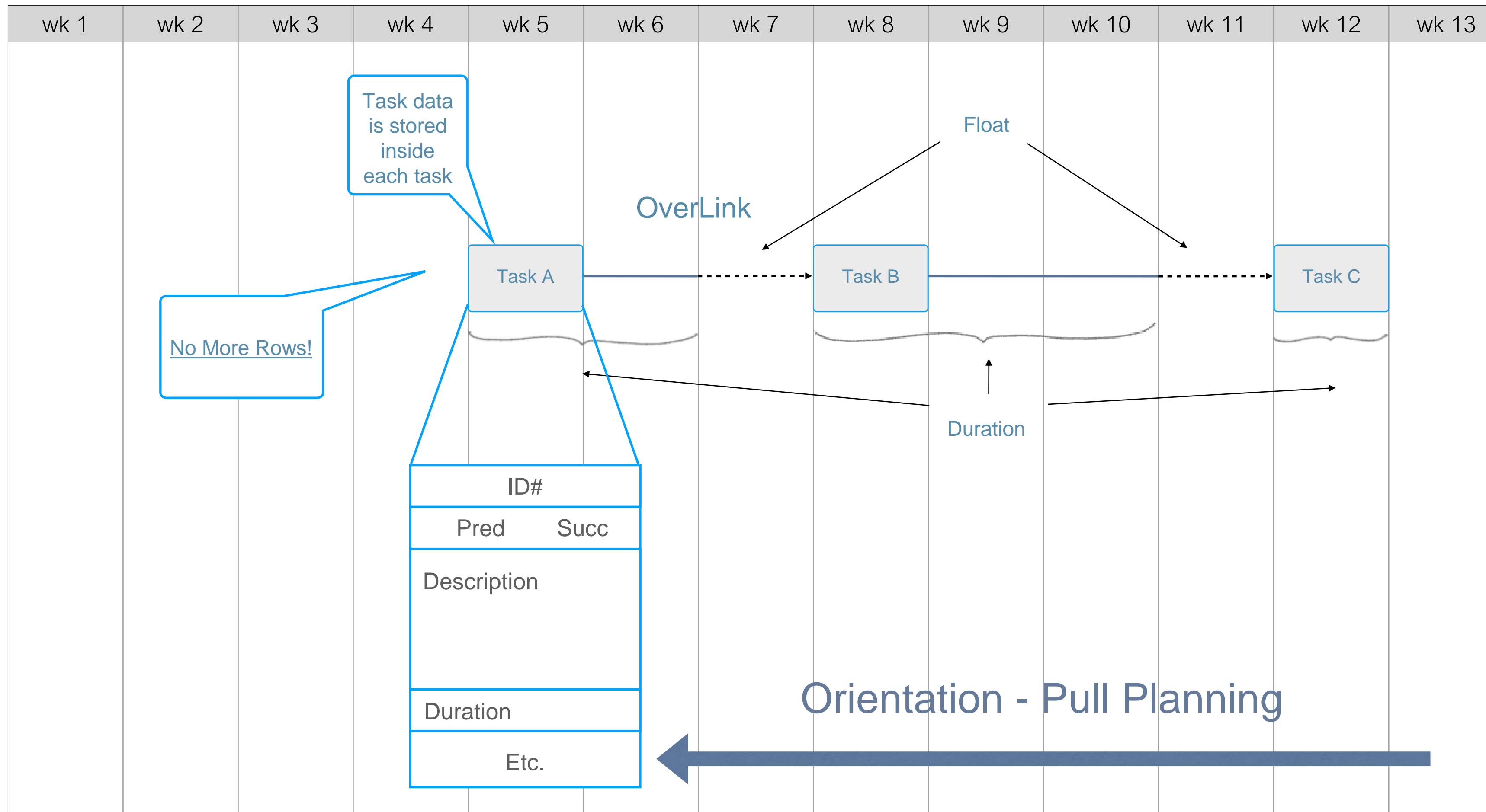
Project Controls
EXPO
London, UK

Time-scaled bar chart (task on bar)



Project flow diagram (task on node)

Rows



Columns



OverVue Planning Systems



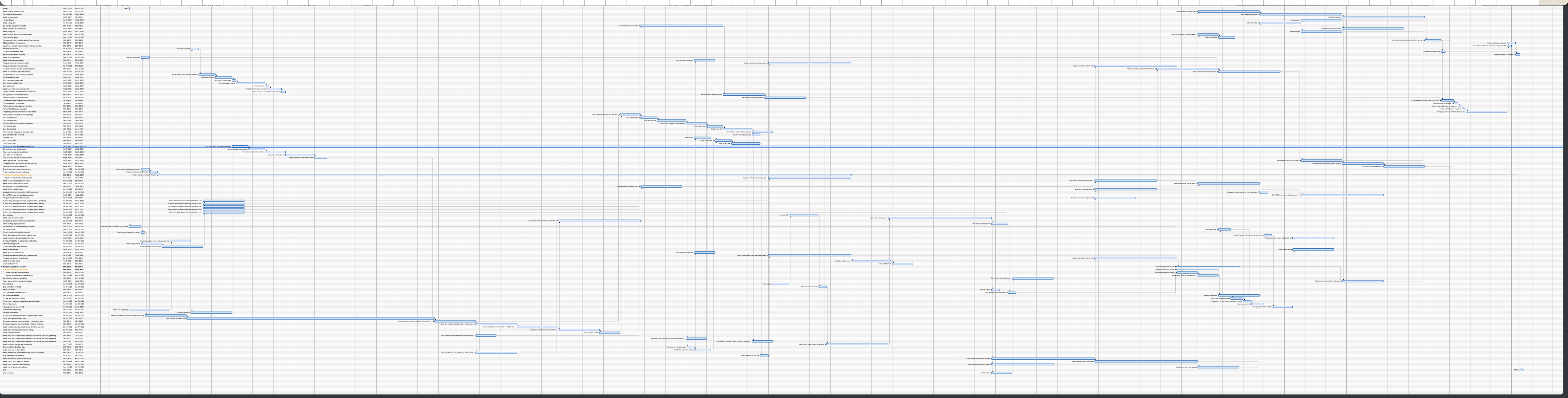
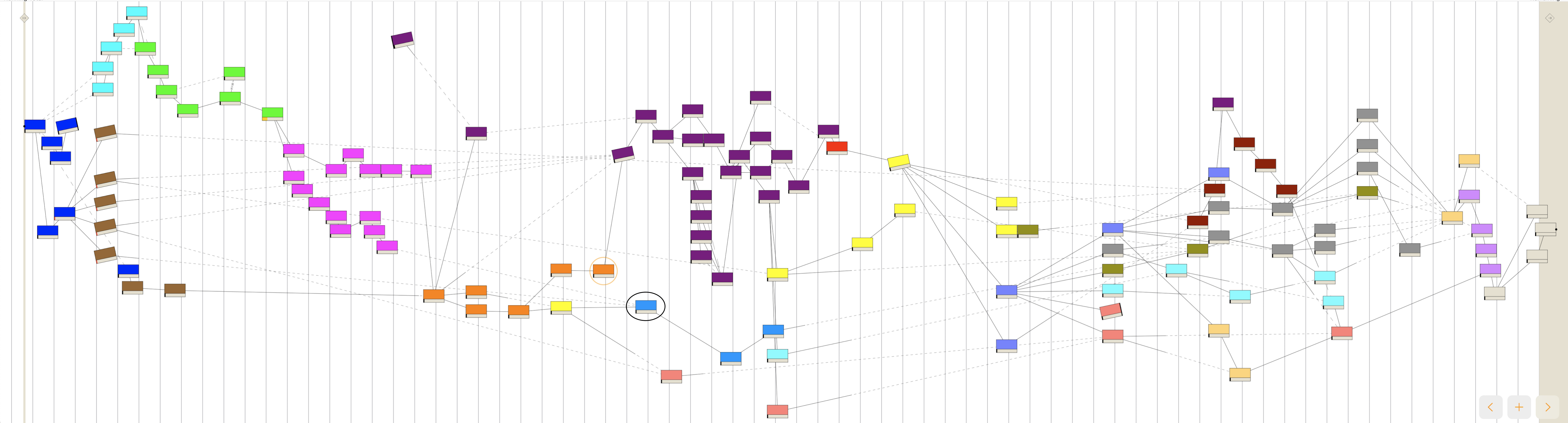
Project Controls
EXPO
London, UK

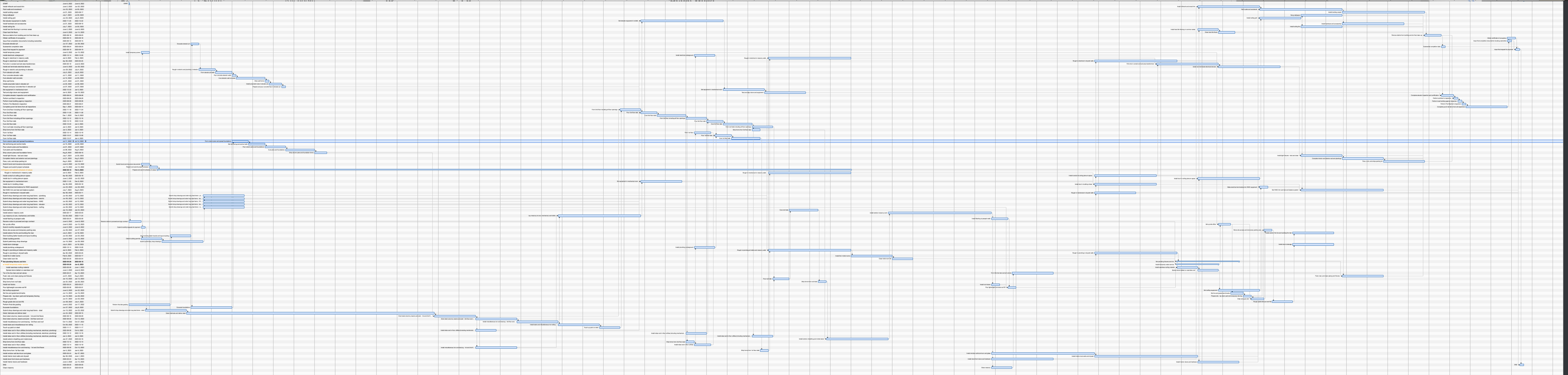
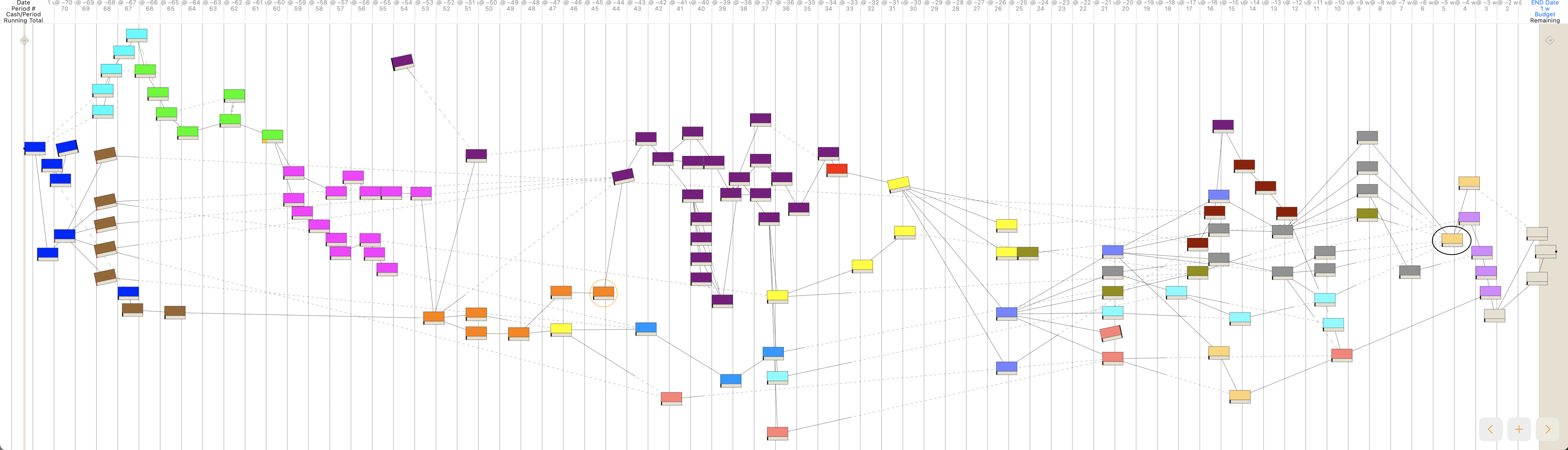
Pull Planning - Reading vs Proofreading

Challenges:

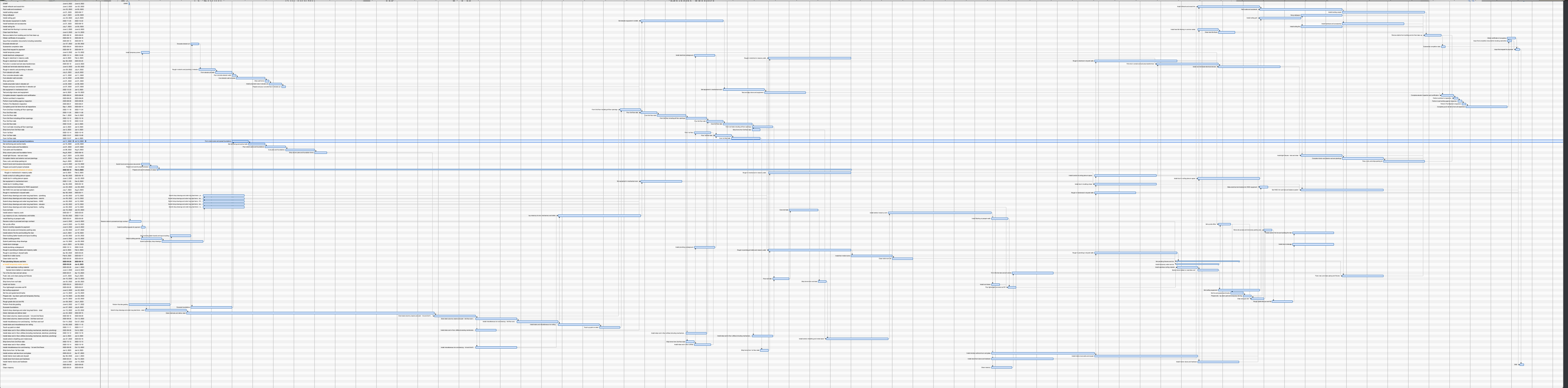
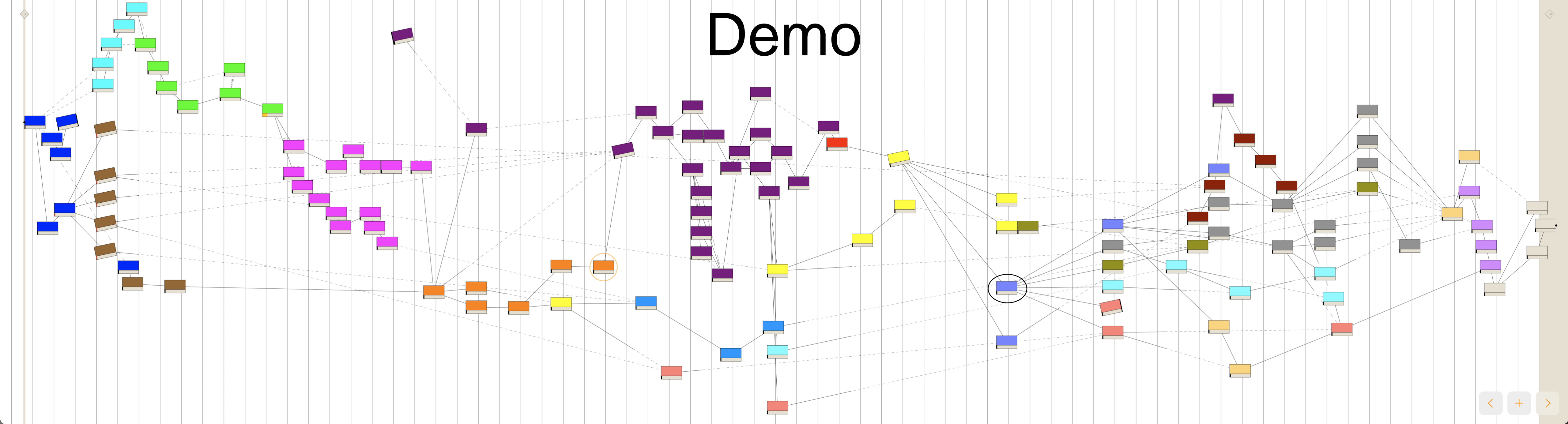
- ~~Data confined to 'rows' and separate tables~~
- ~~Myth - 'only use pull planning if you know the end date...' (not true)~~
- Disorientation - working in the 'opposite direction' is initially uncomfortable
 - Takes a couple hours, then...
- Initial tendency to run down paths - (we want to look at it 'normally')
 - Zig-zag pattern - right to left, top to bottom







Demo



Transocean's 'Deepwater Titan'

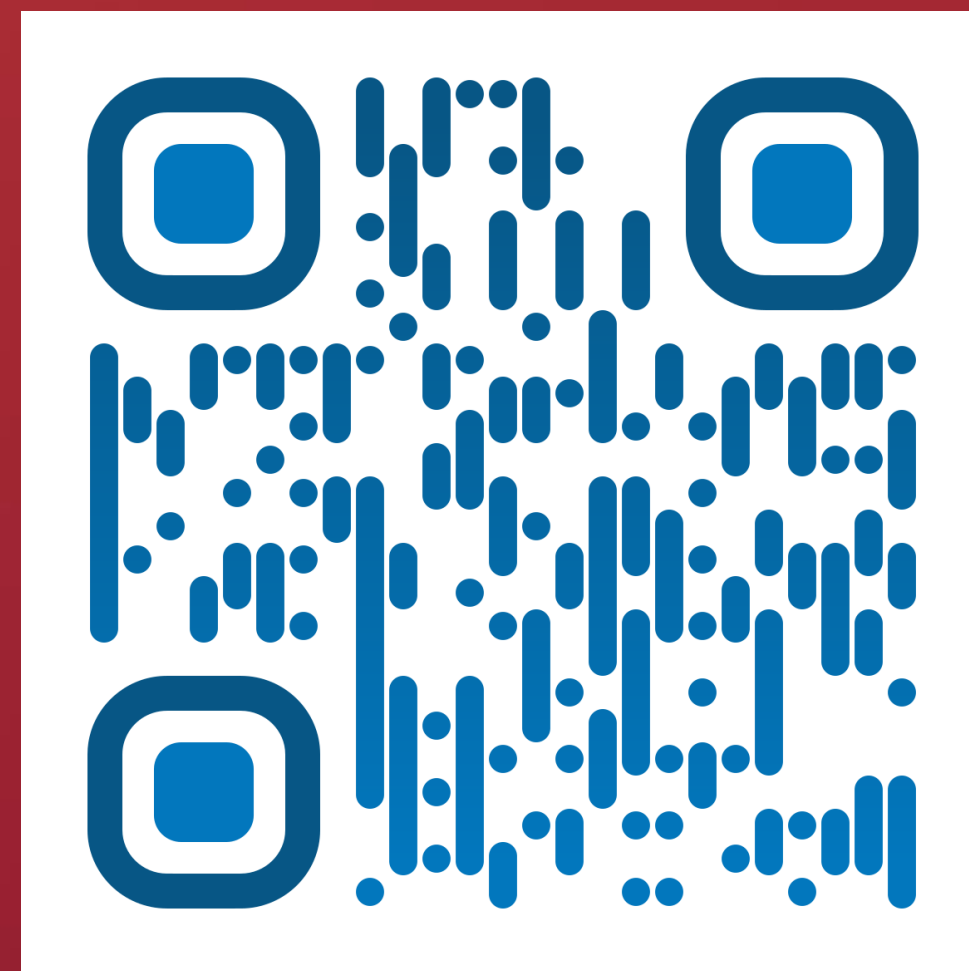


OverVue Planning Systems



Project Controls
EXPO
London, UK

Q & A





THANK YOU