

HS2 – Project Controls, leaving a legacy



James Dalton
Regional Director
AtkinsRéalis



Samantha Price
Associate Director
Turner & Townsend



Modebayo Johnson
Graduate Project
Controls Engineer
AtkinsRéalis



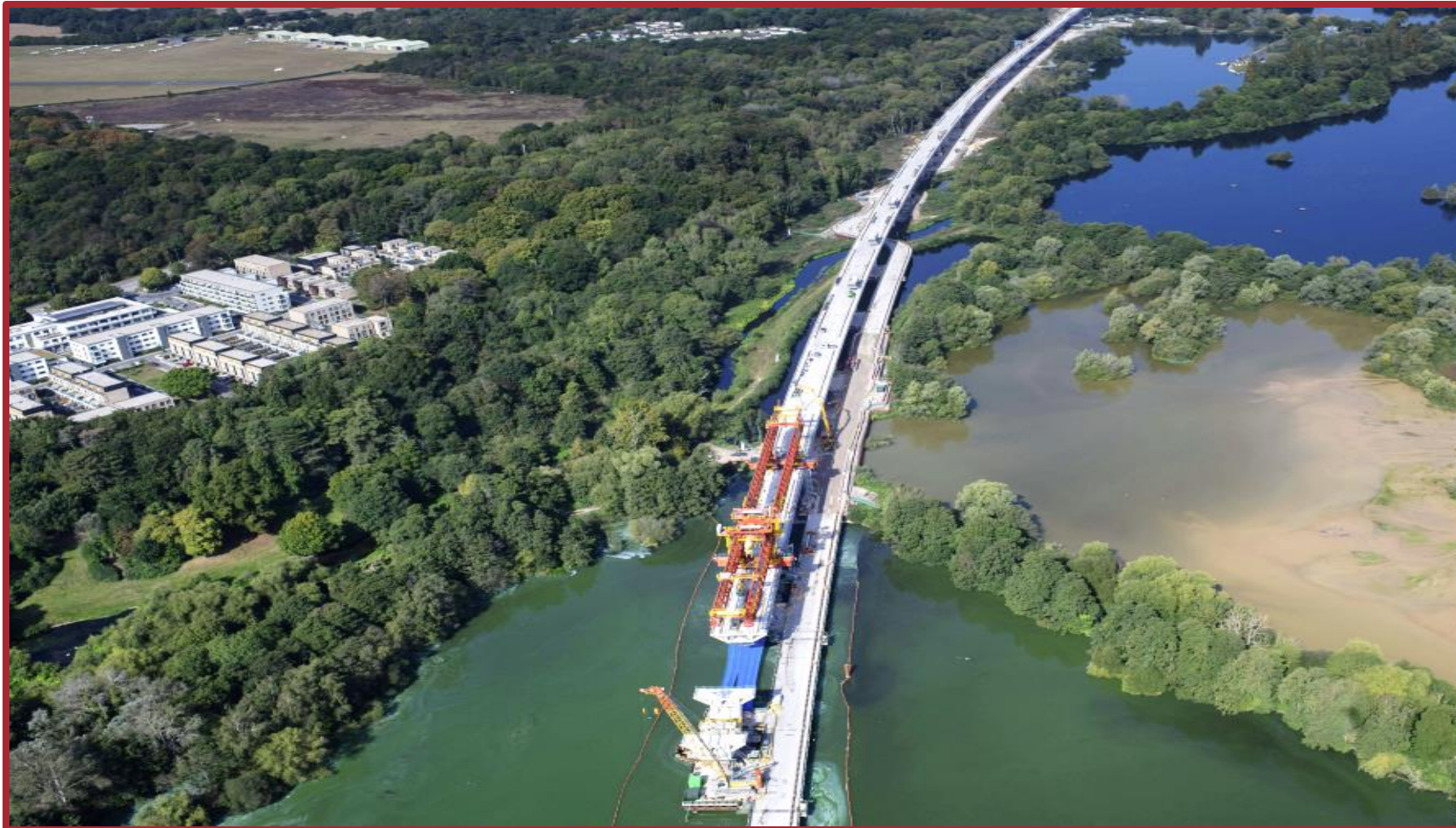
Colette Ricketts
Project Controls Director
HS2























AtkinsRéalis HS2  Turner & Townsend

 **Project Controls**
EXPO
London, UK













AtkinsRéalis HS2  Turner & Townsend

 **Project Controls**
EXPO
London, UK













