

The Human Factor in Project Delivery


Brian McCarthy, PE, CCM, PMP



“Project delivery is a social activity and we manage complexity by managing relationships”

For millennia, navigating the social network was the most complex activity of humans and was essential to our survival as a species.

To expand our group beyond
about fifty to one hundred people,
we need stories.



We've been doing projects for a very long time. As projects have become more technically complex, they have also become more socially complex.

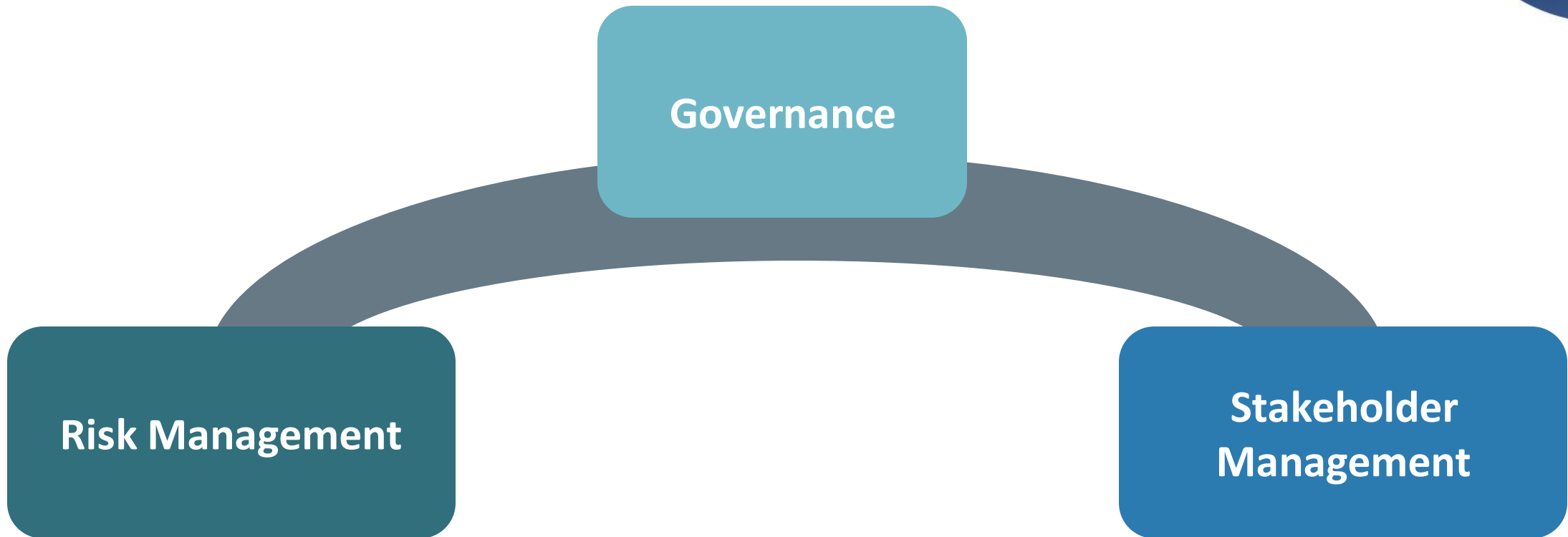


In this technically and socially complex environment, decision making is a very human process.

Strategies



Understand the big picture



Governance, Stakeholder Management and Risk Management drive project integration



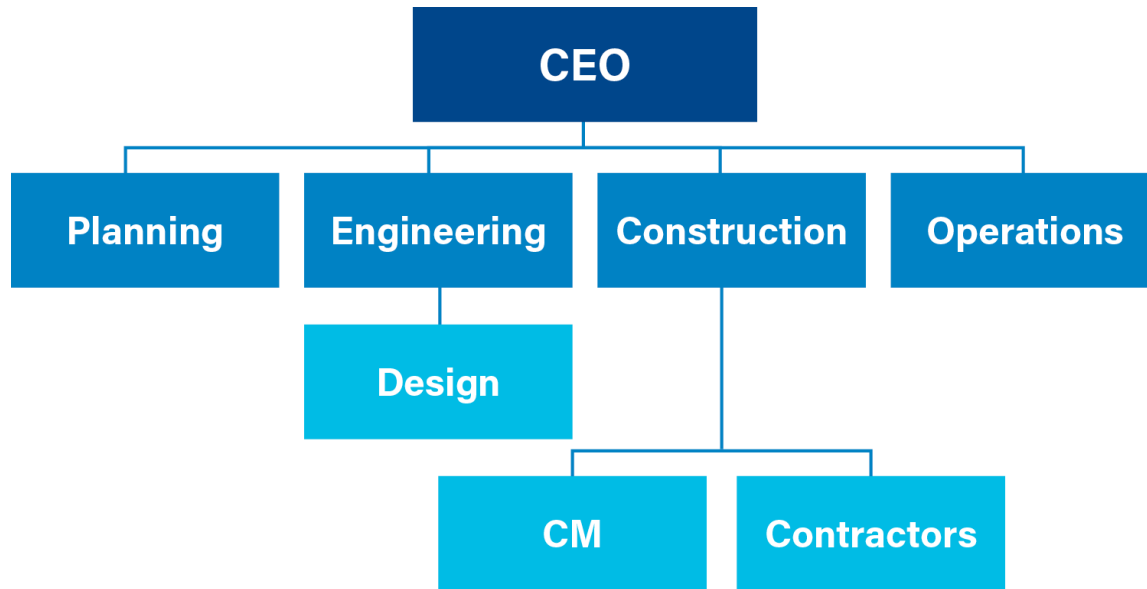
Think of Schedules and Estimates as Models

“Models: Organizing devices that facilitate a continuous explicit dialogue among multiple sources of data and assumptions.”

- David Britt

Think about networks

How we plan



How we work



Beware of Bias and Noise

Bias – the Planning Fallacy

- Optimism
- Anchoring
- Recency
- Power
- Egos
- Task unpacking

Noise

- Level noise
- Pattern noise
- Occasion noise

Managing time is more than measuring time

Chronos

- Clock
- Calendar
- CPM Schedule

Kairos

- Moment
- Opportune time
- Singular event

Help shape the stories of our profession





THANK YOU