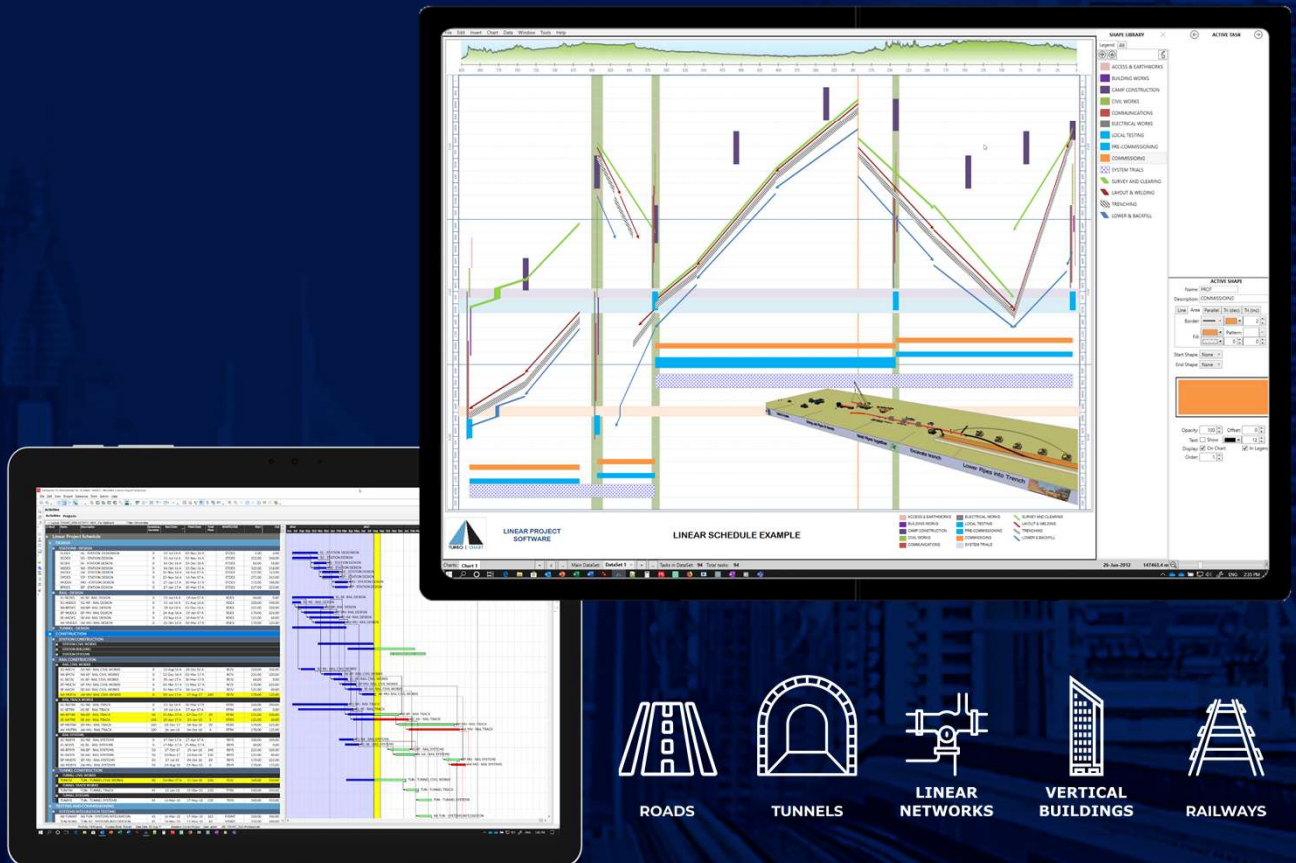




TURBO | CHART

The easiest and fastest way to create Time Location charts & Linear Schedules for linear projects

Directly from your schedule data in Primavera P6, MS Project, Asta Powerproject, Safran Risk or any Spreadsheet ready data source.



<http://www.turbo-chart.com>

support@linearprojectsoftware.com

ORACLE
PRIMAVERA


Safran Risk™

 Powerproject®



Print Layouts

Customise Print Layouts: position variable text, image and chart elements. Save As Print Layout Templates

Rotate chart axes: Time can be vertical or horizontal

Chart Image

Associate contextual images: such as plans, maps, schematics, sections to the chart location grid. Assists in representing project areas.

Location Grid

Schedule tasks are positioned based on location codes and/or start+end values from schedule (or manually entered)

Customise location grid: position, scale, location codes, start and end values, direction, text font, line type

Time Grid

Schedule task start and end dates determined from scheduling tools (or manually entered)

Customise time grid: position, timescale, start and end values, text font

Schedule Activities

Present selected schedule activities on time and location grid

Shape Library

Customise the appearance of Schedule tasks using Shape Codes: shapes, colours, line types, fill. Re-use across Turbo-Chart projects by saving shape library files

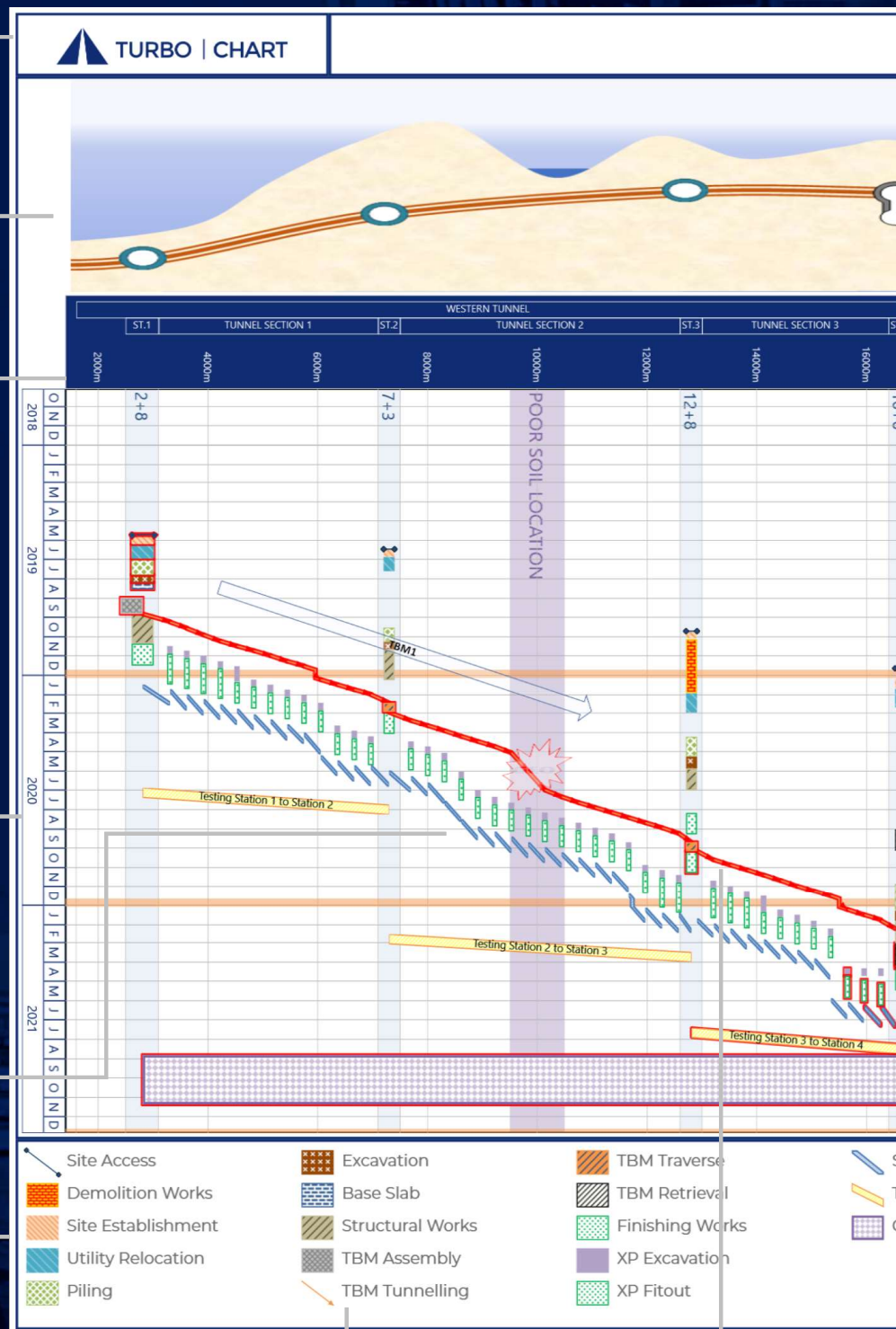


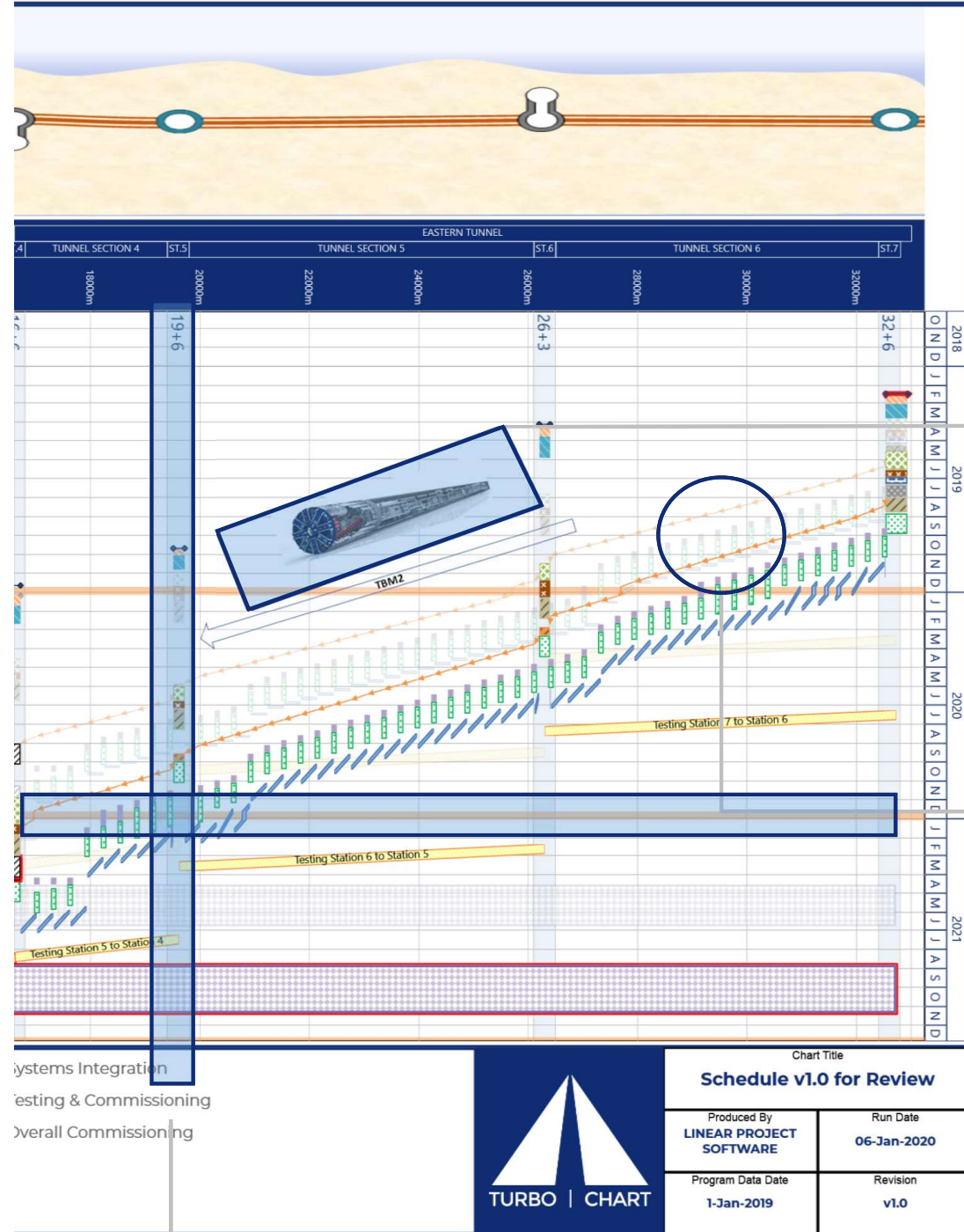
Chart Legend

Customise the legend for each chart select the visibility of shapes on each legend, alter the order and legend description of shapes

Critical Paths

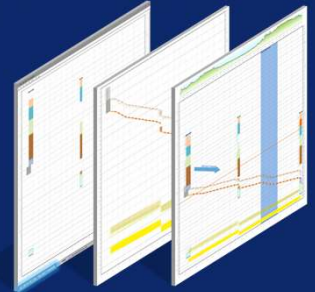
Display schedule critical paths, using custom display options, including showing criticality on datasets, eg baseline critical path vs current critical path

METRO TUNNEL PROJECT



Multiple Charts

Turbo-Chart can contain multiple charts, each with their own date and location ranges, filter for specified Shape Codes, annotations and highlighters.



Charts: CHART 1 - STATIONS CHART 2 - TUNNELS CHART 3 - FULL CHART

Chart Annotations

Text and Image Annotations can be added per chart for additional information

Annotations can be fixed to a position on the chart, fixed by date & time position, or be linked relative to a tasks position, as the tasks schedule date is updated

Annotations can be copied from other sources (eg. MS Word or Powerpoint graphics) and pasted into Turbo-Chart

Multiple Datasets

Import Data from multiple sources into a single Turbo-Chart file to generate Datasets

Charts can then set display upto three datasets for comparison. Use to compare e.g.

- Summary vs Detailed
- Actual vs Planned
- Scenario 1 vs Scenario 2
- Deterministic vs P80 Risk Adjusted
- Compare across multiple contractors data

Each Dataset can be show in varying level of Opacity (Transparency) or blended to a pre-defined colour selection

Chart Highlighters

Highlighters let you draw custom lines or shaded bands across locations, dates (or both). Use to highlight areas on the project, or certain date ranges.

Highlighters can be saved and exchanged, or imported by pasting values generated in a spreadsheet.

Why Use Turbo-Chart?



Cost Effective | Turbo-Chart is significantly cheaper than alternative tools, and doesn't require extensive time and effort on training



Quick to Learn | Learning Turbo-Chart is measured in hours, not days, weeks or months as alternative methods require



Easy to Use | Produce charts directly from your schedule data, without additional modules or complicated import processes



Instantly Update and Compare Schedules | As your schedule changes, Turbo-Chart updates your charts in seconds, and lets you compare schedules



Avoid Duplication and Integration Issues | Turbo-Chart works with your schedule data, avoids extracting to another tool requiring re-integration, maintaining a single source of schedule information

Visit our website to download a trial, or purchase monthly and annual subscriptions

<http://www.turbo-chart.com>



TURBO | CHART

support@linearprojectsoftware.com